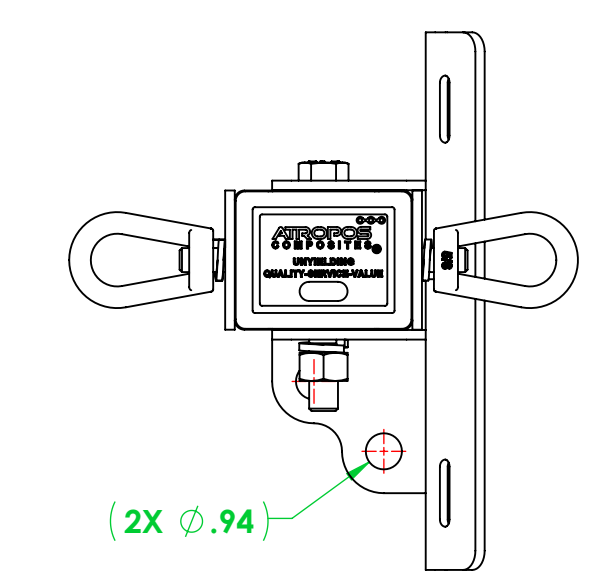
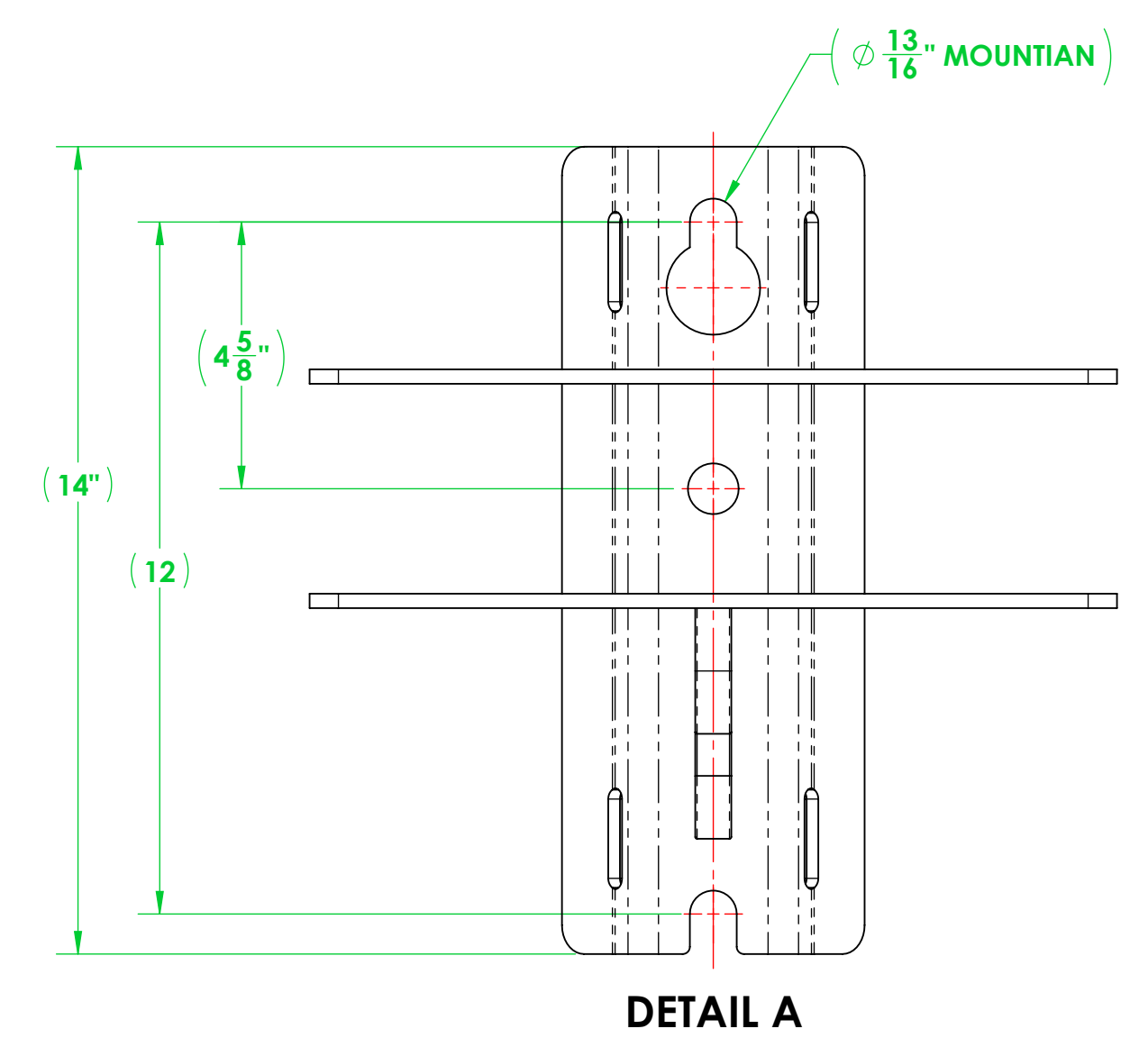
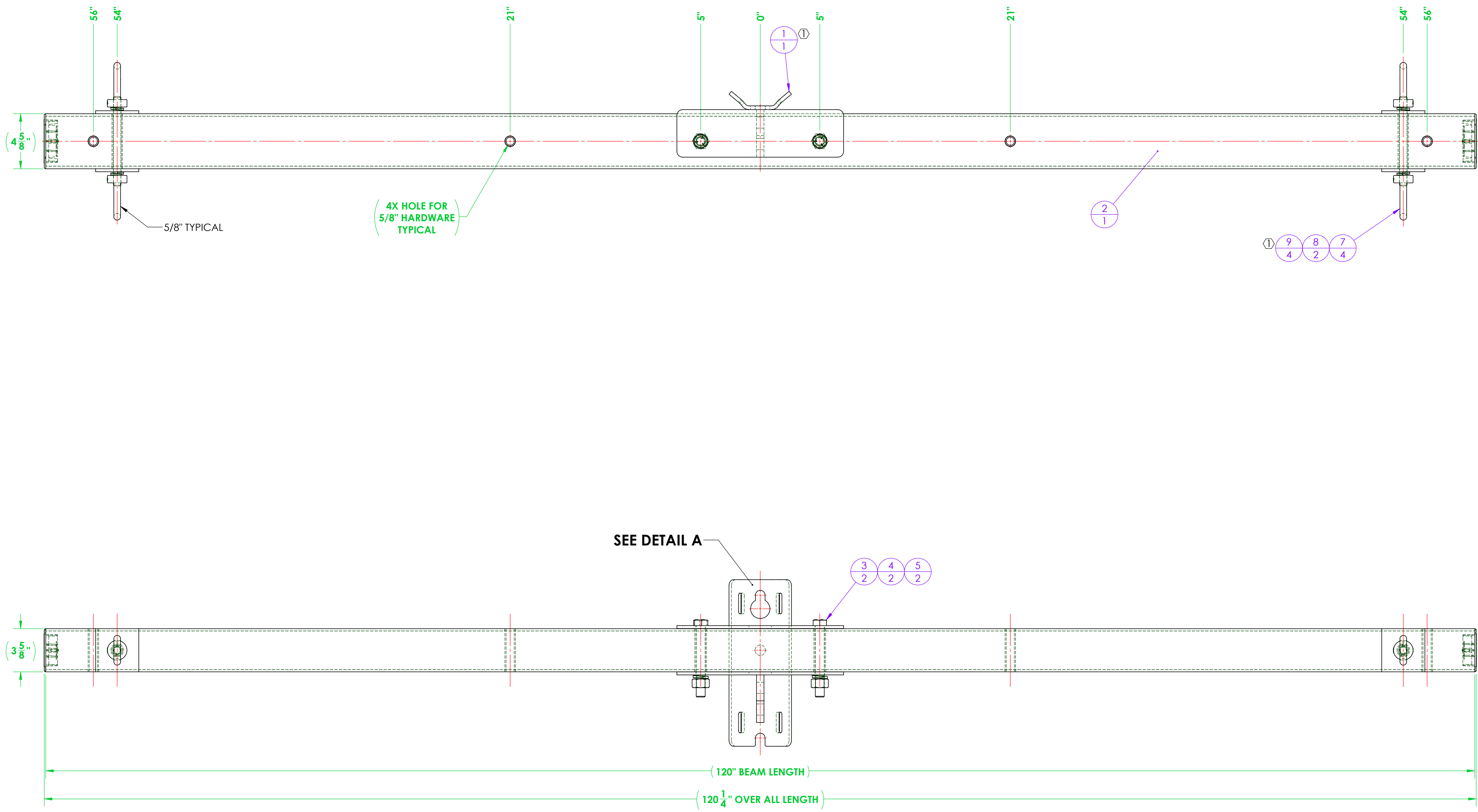


REVISIONS			
REV.	DESCRIPTION	DATE	APPROVED
-	NEW RELEASE	-	-
1	MOUNTING BRACKET WAS FABRICATED NOW PURCHASED. PLATE WASHERS WERE FABRICATED NOW PURCHASED.	4/22/2026	F. BRYANT



ITEM NO.	PART NUMBER	DESCRIPTION	QTY.
① 1	A700-0044	CROSSARM MOUNTING BRACKET, DEADEND, 3400 SERIES	1
2	3401A120-D312-2R10 CA	ASSEMBLY, 3401 DEADEND CROSSARM, 10'	1
3	A616-0020-02	BOLT, HEX, 3/4"-10 X 6.00" LONG, HOT DIPPED GALVANIZED STEEL, 1-1/8" DRIVE	2
4	A616-0042-01	LOCK WASHER, FOR 3/4" SCREW, 0.766" ID, 1.265" OD, 0.188" THICK, HOT-DIPPED GALVANIZED STEEL	2
5	A616-0019-02	EXTREME STRENGTH NUT, HEX, 3/4"-10, 2H, HOT-DIPPED GALVANIZED	2
6	A616-0042-02	LOCK WASHER, FOR 5/8" SCREW, 0.641" ID, 1.073" OD, 0.156" THICK, HOT-DIPPED GALVANIZED STEEL	4
7	A616-0017-02	EYENUT, 5/8"-11, GALVANIZED STEEL	4
8	A711-0044	ALL-THREAD, 5/8"-11 X 7.50" LONG, GALV. STEEL	2
① 9	A700-0049	WASHER, SQUARE, 3.625" X 3.625" X 0.25 THICK WITH 0.66 THRU HOLE	4

GENERAL NOTES	UNLESS OTHERWISE SPECIFIED	NAME	DATE
	DIMENSIONS ARE IN INCHES STANDARD TOLERANCES	DRAWN: F. BRYANT	10/16/2025
FRACTIONAL: $\pm 1/32$ ANGULAR: $\pm 0.5'$ BEND: $\pm 2'$ TWO PLACE DECIMAL: ± 0.03 THREE PLACE DECIMAL: ± 0.005 INTERFERE GEOMETRIC TOLERANCING PER: ANSI Y14.5 MATERIAL: FINISH: DO NOT SCALE DRAWING	CHECKED: TJS	10/21/2025	
	ENG APPR:		
	MFG APPR:		
	Q.A.:		
PROPRIETARY AND CONFIDENTIAL			
THE INFORMATION CONTAINED IN THIS DRAWING IS THE SOLE PROPERTY OF VETLUS. ANY REPRODUCTION IN PART OR AS A WHOLE WITHOUT THE WRITTEN PERMISSION OF VETLUS IS PROHIBITED.			
TITLE: ASSEMBLY, RUS, 3401, DEADEND, (2) WIRE, CROSSARM WITH GAIN, 10'		SIZE DWG. NO.	REV
SCALE: 1:8 WEIGHT: 70.34		D3401A120-D312-2R10	1
SHEET 1 OF 1			

